

SCREEN SCOTLAND
SGRÌN ALBA

SCOTLAND'S
FILM AND TELEVISION
STUDIO AND
BUILDSPACE

OVER 10K SQ FT

MAY 2022

Welcome

Scotland has a growing range of studio, build space and conversion opportunities designed to accommodate major feature film and high-end television productions of any scale and genre. From Leith's FirstStage Studios (*Avengers: Infinity War*, *The Rig*, *Anansi Boys*) to Cumbernauld's Wardpark Film and Television Studios (*Outlander*), Glasgow's Kelvin Hall (*Screw*) and The Pyramids in Bathgate (*T2 Trainspotting*), our facilities are conveniently located in and around key production hubs, with excellent access to established crew bases and supporting infrastructure.

Full details are provided on the following pages.

For further information and details of our funding and other services, please visit [Screen Commission | Screen Scotland](#) or contact us direct at locations@creativescotland.com

Contents

BBC Studios – Dumbarton	4
BBC Studios – Pacific Quay	6
Pioneer Film Studios – Glasgow	8
FirstStage Studios – Edinburgh	10
Pyramids Business Park – Bathgate	12
The Shed – Glasgow	14
Wardpark Studios – Cumbernauld	16

BBC Scotland

Dumbarton Studios



Name of site	BBC Scotland – Dumbarton
Owner/company	BBC Scotland
Contact name	BBC Scotland Planning Team
Full address	BBC Scotland, Dumbarton Studios, Exit A82 at Lomond Gate roundabout, Dumbarton G82 2AP
Telephone	0141 422 6500
Email	street.productionfacilities@bbc.co.uk
Website	www.bbcstreet.co.uk
Previous use	<i>Shetland, River City, Two Doors Down and Vigil</i>
Dimensions of space – height/width	The facility currently offers studio space of 18,000 sq ft, build/construction space and a full size back-lot
Soundproofing	The studios are acoustically treated to reduce noise pollution and have a 3-phase power supply
Blackout	Yes
Access details	Dumbarton Studios is located within 30 mins of central Glasgow, 20 mins from Glasgow Airport and 10 mins from Loch Lomond and the Gateway to the Highlands
Parking	Ample
Additional features	Canteen, offices, security, workshops. The BBC also has studio space at Pacific Quay (Glasgow) which is available at times
Closest major road	A82
Closest major city	Glasgow
Closest airport	Glasgow
Closest accommodation	Dumbarton or Glasgow





BBC Pacific Quay



Name of site	BBC Scotland – Pacific Quay
Owner/company	BBC Scotland
Contact name	BBC Scotland Planning Team
Full address	40 Pacific Quay, Glasgow G51 1DA
Telephone	0141 422 6500
Email	street.productionfacilities@bbc.co.uk
Website	www.bbcstreet.co.uk
Previous use	<i>Mrs Brown's Boys, Swashbuckle, The Hitlist, Richard Osman's House of Games, Unbeatable and Catchpoint</i>
Dimensions of space - height/width	Studio A 782 sq m height 9 m. Studio B 241 sq m height 6 m
Soundproofing	Yes
Blackout	Yes
Access details	24-hour drive-in access
Parking	Plenty
Additional features	Production office, green rooms, dressing rooms, make-up, wardrobe, laundry, audience handling area and restaurant
Closest major road	Govan Road and M8
Closest major city	Glasgow
Closest airport	Glasgow
Closest accommodation	Glasgow





Pioneer Film Studios

Glasgow



Name of site	Pioneer Film Studios
Owner/company	Pioneer Film Studios Limited
Contact name	Maureen Hascoet
Full address	Pioneer Film Studio, Office 1A Ground Floor, Buchanan Tower, Buchanan Park, 183 Cumbernauld Road, Stepps, G33 6HZ
Telephone	0141 319 5610
Email	studio@pioneerfilmstudios.co.uk
Website	www.pioneerfilmstudios.co.uk
Previous use	Warehousing, logistics, general office space and Whisky Distilling
Dimensions of space - height/width	Stage Space: 130,000 sq ft Stage 11: 30,000 sq ft flexible space, 8m high (10m at the peak) – can be split into 2 x 15,000 sq ft stages with soundproof mobile partition Stages 4-9: 6 internally linked studios each measuring 18,000 sq ft with 8m rising to 10m clearance. Accessible via internal 4mx4m roller shutters and 4mx4m roller shutters from each studio to the external areas Workshops: 108,000 sq ft Unit 3: 13,000 sq ft (with a 5,100 sq ft mezzanine space) Unit 12: 30,000 sq ft Unit 1: 45,000 sq ft Unit 2: 20,000 sq ft Office Space: 107,000 sq ft Stage 11: 4,500 sq ft adjoining office space split over 3 rooms Unit 3: 10,000 sq ft over 14 offices which are split over two floors Unit 12: 4,500 sq ft offices running the length of the building Unit 12 Upper: 10,000 sq ft 1st floor office/ancillary space Unit 12 Lower: 10,000 sq ft ground floor office/ancillary space Bottling Plant: 10,000 sq ft office / ancillary space Tower: 58,000 sq ft split over a 9-floor tower with two, 2 floor wings Yard Space: 305,07 sq ft Yard 1: 17,242 sq ft Yard 2: 21,780 sq ft Yard 3: 13,068 sq ft Yard 4: 21,780 sq ft Yard 5: 43,560 sq ft Yard 6: 74,052 sq ft Yard 7A: 34,845 sq ft Yard 7B: 30,495 sq ft Yard 8: 35,000 sq ft Yard 10: 13,068 sq ft All yard space is gravel hardstanding contained (fenced & lockable)
Soundproofing	Yes, fully - double brick with interior cladded soundproofing
Blackout	Yes
Access details	Pioneer Film Studios is located 2 mins from the M80
Parking	46,000 sq ft parking and yard space split over two yards Yard 2: 11,000 sq ft, Yard 8: 35,000 sq ft
Adjacent land/backlot	Per production discussion
Additional features	Childcare facilities services available (supplied in partnership with The Wonder Works), on site café, close proximity to Bannatynes Gym & Spa

- Traffic noise** Low outdoors, zero indoors
- Closest major road** Cumbernauld Road
- Closest major city** Glasgow
- Closest airport** Glasgow International Airport: Travel time - 30 mins
Cumbernauld Airport: Travel time - 14 mins
- Closest accommodation** Steps/Glasgow
[Premier Inn Glasgow Steps](#) - adjacent
[Best Western Garfield House Hotel](#) - adjacent
[The Crowwood Hotel](#) - 5 mins



FirstStage Studios Edinburgh



Name of site FirstStage Studios

Owner/company FirstStage Studios Ltd

Contact name Bob Last

Full address 31 Bath Road, Leith, Edinburgh EH6 7AH

Email sales@firststagestudios.com

Previous production use Netflix's *Eurovision*, Wild Mercury/Amazon's six-part series *The Rig*

Dimensions of space - height/width Self-contained site in excess of 90,000 square feet of flexibly configured blacked out part soundproofed shooting space, up to 82 feet/25m high. 1 x 60-ton gantry crane giving full reach across stage B. 1 x 20-ton gantry crane giving full reach across stage A.

Soundproofing Yes

Blackout Yes

Office Space 2 x circa 9,000 square foot self-contained production offices. 5,000 square feet of additional office/costume/art department stores.

Parking Over 250 car/truck parking spaces. Extensive hardstanding.

Additional features Circa 35,000 square feet of workshops. 15m x 5m x 5m deep pit. Over 2000 amps of 3 phase 240-volt power. 3 Phase, 16-amp, 13 amp and 110-volt power available throughout. Ultra-high bandwidth connectivity available throughout the facility through a fibre backbone. On site rigging and IT services.

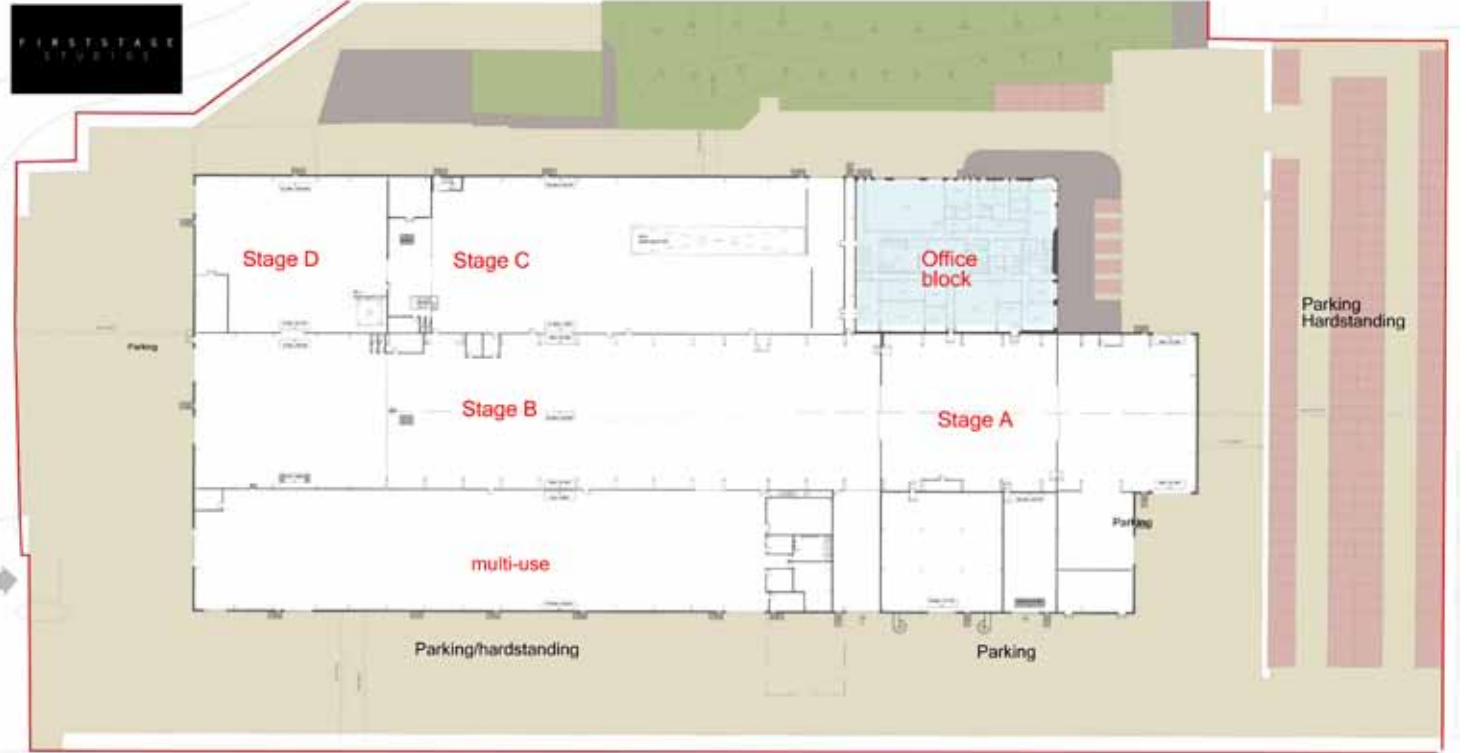
Closest major road A1

Closest major city Glasgow: Travel time - 1hr 17min. Mileage: 58
Edinburgh: Travel time - 11 min. Mileage: 2.4

Closest airport Edinburgh International

Convenient location close to the city with a wide range of nearby amenities including accommodation of all standards, bars, cafes and Michelin starred restaurants.





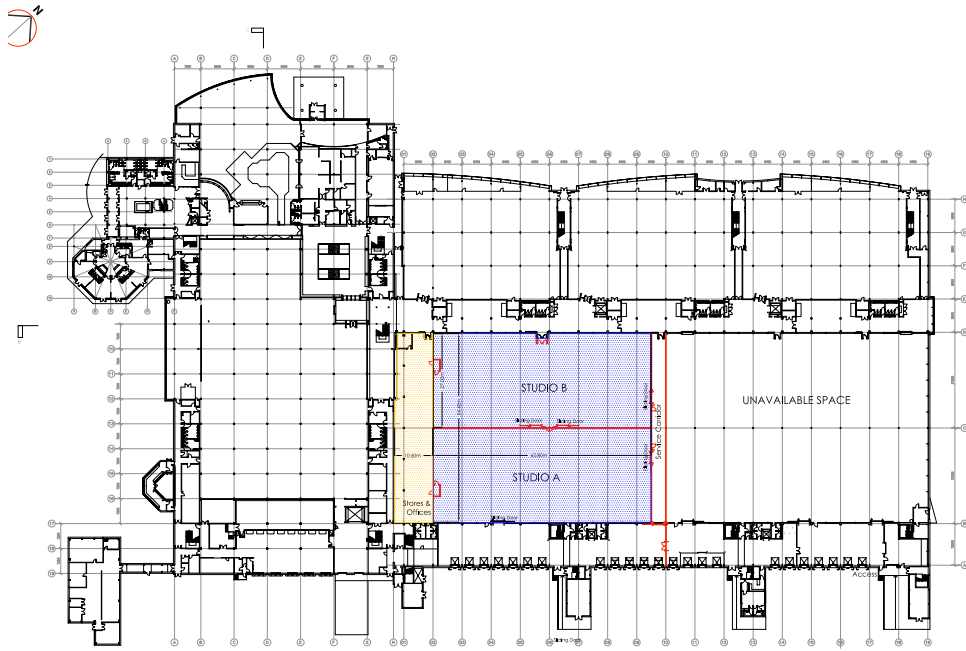
Pyramids Business Park

Bathgate



Name of site	Pyramids
Owner/company	LR Edinburgh
Contact name	James Troughton
Full address	Pyramids: Easter Inch, Bathgate, West Lothian, EH48 2EH Lrp: 55 Baker Street, London, W1U 8EW
Telephone	02075630947
Email	Jtroughton@lrp.co.uk
Website	Lrp.co.uk
Previous use	<i>Offices and Warehouse</i>
Dimensions of space	One 60,000 sq ft stage
- height/width	One 40,000 sq ft stage 150,000 sq ft of workshops and offices
Soundproofing	No
Blackout	Partial - windows in offices, though not in the warehouses/studios
Office space	Yes
Access details	Easy access off the M8 Junction 3A
Parking	Over 1,500 spaces
Adjacent land/backlot	Yes - site located on a 93-acre plot
Additional features	On site café
Traffic noise	None
Closest major road	M8
Closest major city	Edinburgh
Closest airport	Edinburgh
Closest accommodation	Bathgate: Premier Inn Livingston (Bathgate) 2 mins Edinburgh: 20 mins



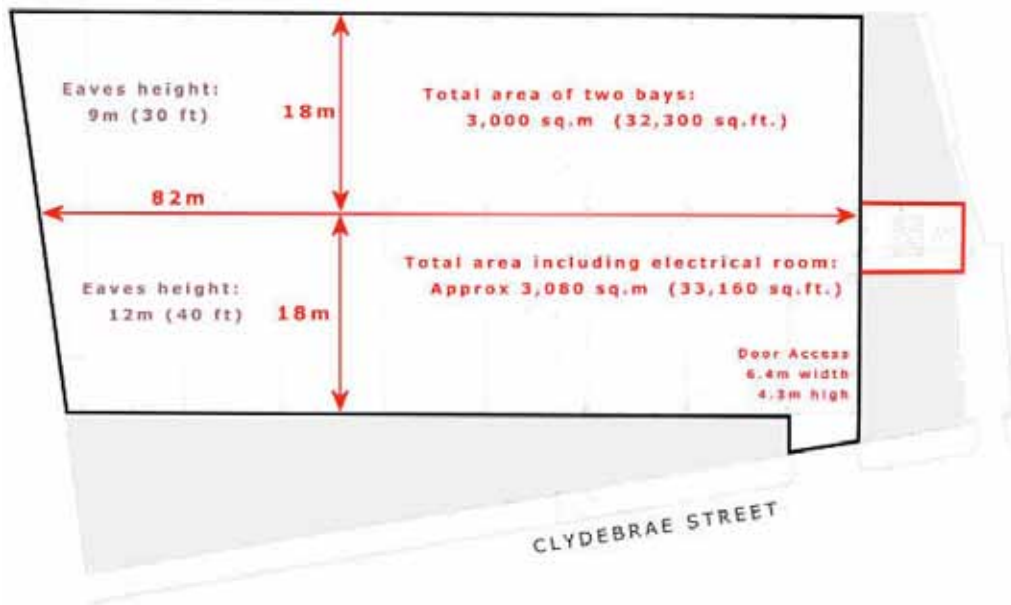


The Shed Glasgow



Name of site	The Shed – Glasgow
Owner/company	Embee Properties Ltd
Contact name	Angus McMillan
Full address	23 Clydebrae Street, Govan, Glasgow G51 2AG
Telephone	0141 959 0953
Email	office@embee.co.uk
Website	www.govan-shed.co.uk/media.php
Previous production use	<i>The Big Picnic, The Ship, Valhalla Rising, BBC's Men of Rock and World War Z</i>
Dimensions of space - height/width	Two bays totally 32,300 sq ft 30-40 ft
Soundproofing	Partial
Blackout	Some sky lighting
Access details	24-hour access located on Govan Road, access on Clydebrae Street
Parking	Yes – 30 cars
Additional features	Lighting
Closest major road	2km from the M8
Closest major city	Glasgow
Closest airport	Glasgow Airport
Closest accommodation	Glasgow





Wardpark Studios

Cumbernauld



Name of site	Wardpark Film and Television Studios
Owner/company	Wardpark Film and Television Studios
Full address	Wynford Road, Cumbernauld, G68 0BA
Email	info@wardparkstudios.co.uk
Website	www.wardparkstudios.co.uk
Previous production use	<i>Outlander</i>
Dimensions of space - height/width	A stage - 13,000 sq ft. Height 40 ft B stage - 12,000 sq ft. Height 21 ft C stage - 11,500 sq ft. Height 26 ft D stage - 11,500 sq ft. Height 26 ft E stage - 5000 sq ft. Height 18 ft
	Flexible production, art and office space - 37,000 sq ft. Paint workshop (natural light) - 11,500 sq ft Props area - 11,500 sq ft Makeup, costume, laundry - 22,000 sq ft Construction space - 70,000 sq ft
Soundproofing	Yes
Blackout	Yes
Access details	Located 20 minutes drive from central Glasgow
Parking	Parking for over 300 cars Parking for trailers
Additional features	Workshop, prop area, make-up and costume space, purpose built cutting rooms. 24/7 on site security.
Closest major road	M80/Wynford Road
Closest major city	Glasgow
Closest airport	Cumbernauld (2 minutes), Glasgow (30 minutes), Edinburgh (30 minutes)
Closest accommodation	Castlecary Hotel (2 mins drive)

